

KODAK DIGITAL GEM Professional Plug-In 2.1

Installing Kodak's DIGITAL GEM Professional Plug-In

If you have not downloaded and installed DIGITAL GEM Professional, go to <http://www.asf.com/download/>

Download the installer for your operating system (Mac or Windows) or install from a Kodak Plug-In CD. If you have your image editor open at the time of installation, close it.

Run the DIGITAL GEM Professional installer.

This will install a trial version of our Plug-Ins so they are available in a Photoshop Plug-In compatible image editor.

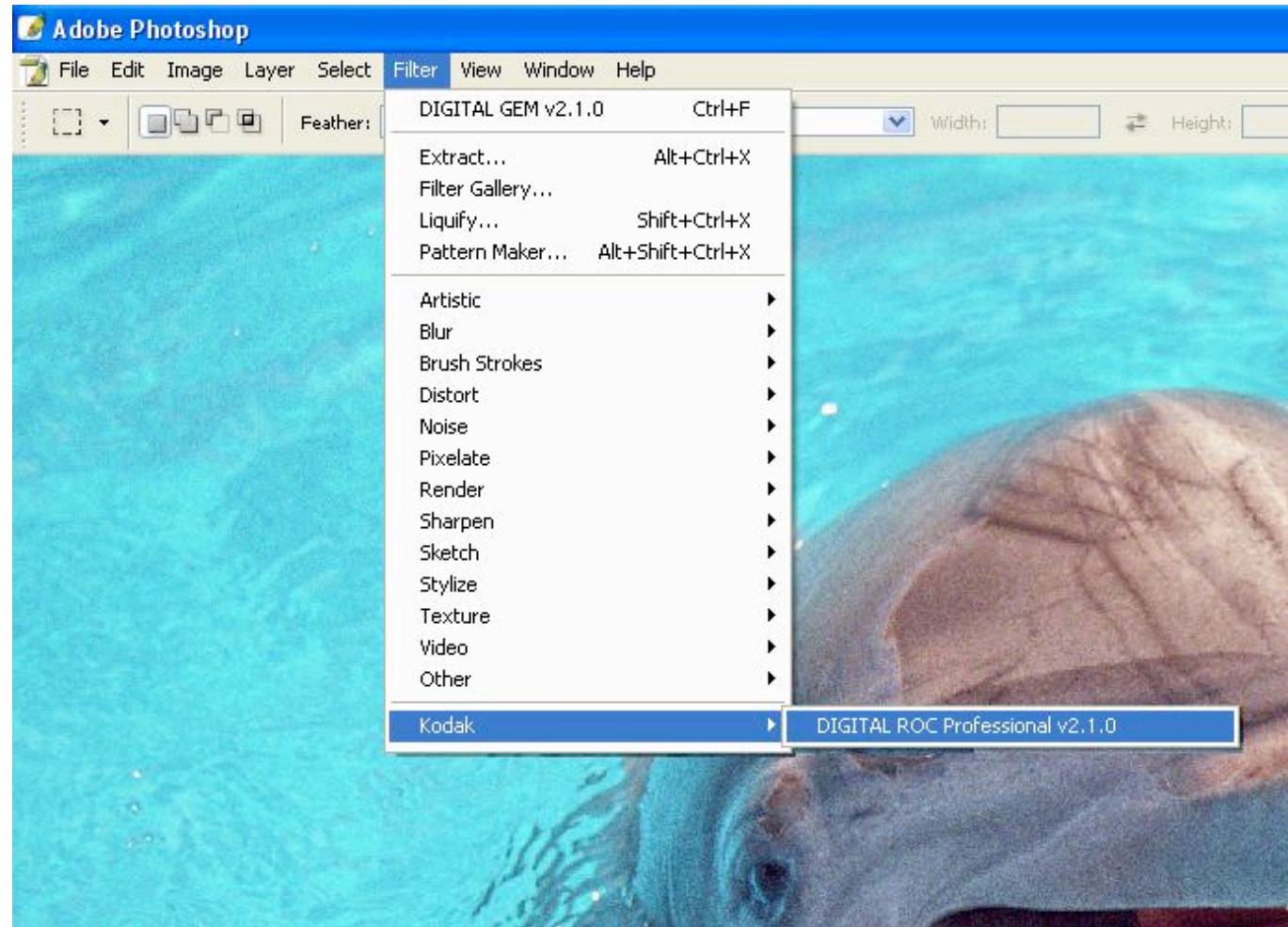
The only difference between the trial version and the registered version is the trial version places a watermark on your images after you have run the Plug-In. Once you register the trial version the Plug-In will no longer put the watermark on your images. It is important that you do not save over the original with a watermarked image. The watermark cannot be removed from a saved image.

Open your image editor and open an image to edit. In order for the DIGITAL GEM Professional to work the image must be at least 512 by 512 pixels. If your image is smaller than this you can change the image size to the minimum. If you need a smaller image resize the image to your requirements after you use the Plug-In.

Starting KODAK DIGITAL GEM Professional Plug-In

Once your image is open, start DIGITAL GEM Professional Plug-In. This slide shows how to start the plug-in with Photoshop CS.

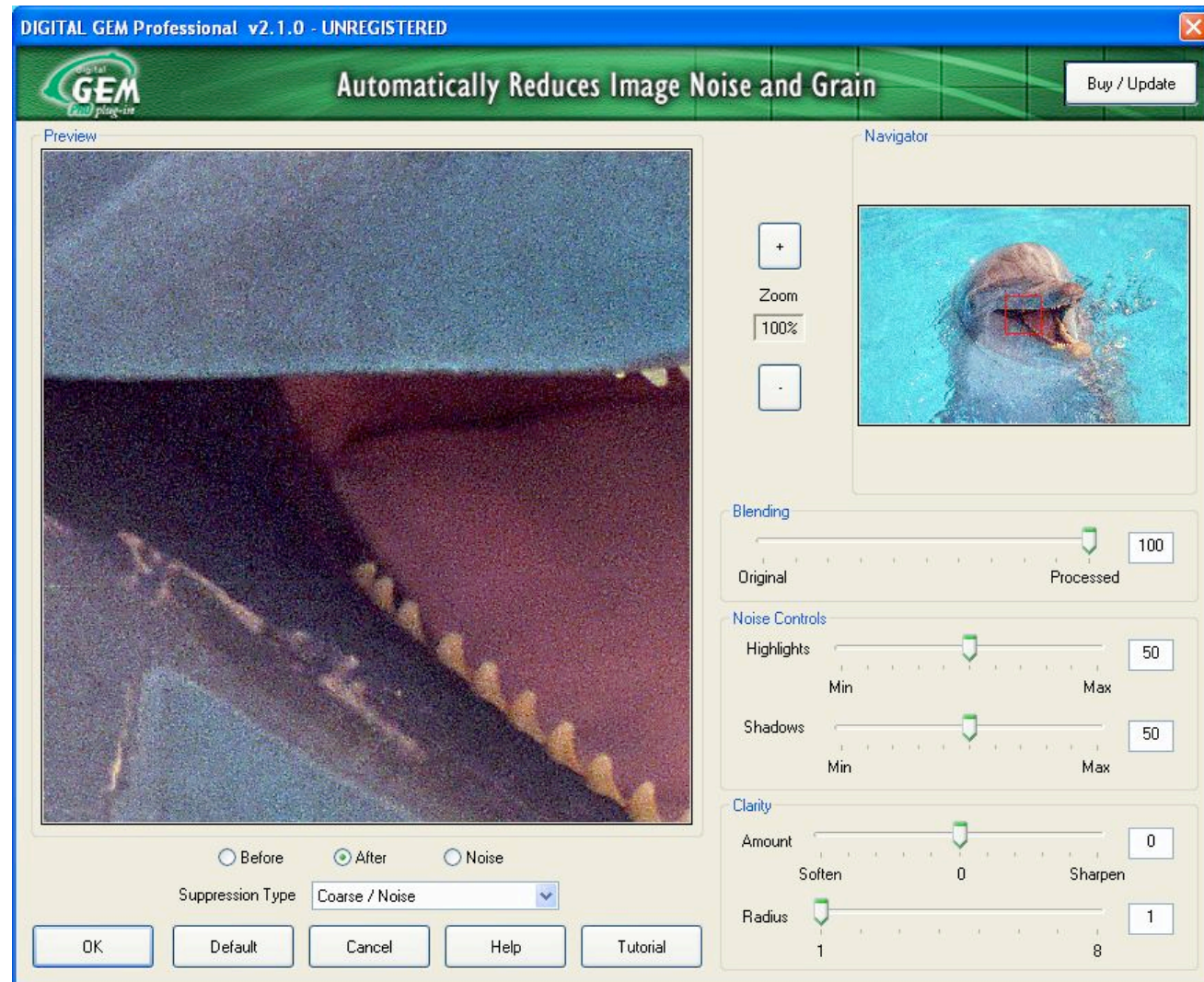
Go to the Filter menu and Click on Filter and point to Kodak, then select the plug-in from the list of KODAK Plug-Ins that are available.



KODAK DIGITAL GEM Professional Plug-In Interface

This is the Plug - In interface. The window opens with your image so that you can begin editing.

The **Buy/Update** button opens the registration window. The next slide shows how to work with the registration.



Registering KODAK DIGITAL GEM Professional Plug-In

With the Plug-In open, click on the **Buy/Update** button

Click on **Purchase Online** which takes you through a process to purchase the DIGITAL GEM Professional Plug-In.

Once you have purchased you will be sent an email with your Serial Number. Be sure to save your Serial Number in case of a system crash or moving to a new system. You can print out your registration information at the time of purchase and file it away. Also keep the password you used to sign in.

Once your Plug-In is registered, you can check for updates (which are free) and upgrades by clicking on the **Check for Update** button.



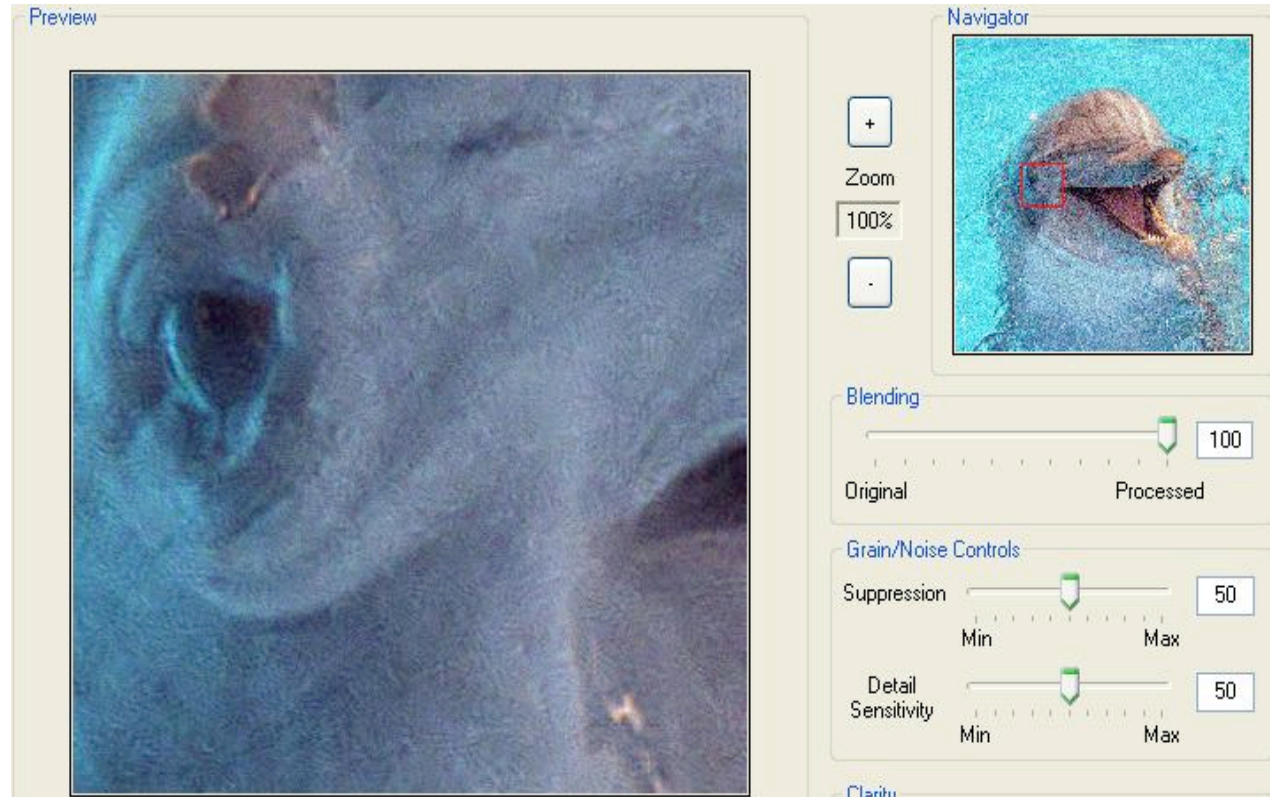
The screenshot shows a dialog box titled "Enter Registration Information" with a blue header and a close button (X) in the top right corner. The main area is light beige. It contains the text "If you need to obtain a Serial Number, you may:" followed by a "Purchase Online" button. Below this is the instruction "Enter the Serial Number you received via email from Kodak when you purchased:" and a text input field labeled "Serial Number:". At the bottom, there are three buttons: "Check for Update", "OK", and "Cancel".

KODAK DIGITAL GEM Professional Plug-In Navigator and Preview Windows

The smaller image in the Plug-In window is a navigator with a red box that shows what is displayed the larger preview image. You can zoom in up to 100% to judge what effect the Plug-In is having on your image.

The Navigator window displays the entire image to be processed. Inside the Navigator window is a red navigator box.

The area inside the red navigator box is displayed in the Preview Window.



You can move the navigator box by clicking your mouse inside the box and dragging or by simply clicking on a different spot in the Navigator window. You can also change the size of the navigator box using the Zoom In Button and Zoom Out Button.

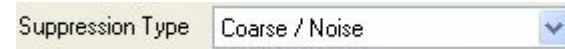
When you use the Zoom in Button (+) to change navigator box the image displayed in the Preview Window will magnify a smaller portion of the image, up to four times pixel by pixel (400%).

When you use the Zoom out Button (-) to change navigator box the image displayed in the Preview Window magnify less of the image up to showing the full image.

When the radio button is on After, you can click on the Navigator image to see the before. This lets you quickly switch between the before and after images.

KODAK DIGITAL GEM Professional Plug-In Controls

At any time you can reset all of the adjustments to their default positions by clicking the **Default** button. The options you choose will remain changed as long as you click OK and apply the changes. If you click Cancel the settings will revert to the setting in place when you last opened the Plug-In.



Generally, **Fine / Grain** is used for scanned film and **Coarse / Noise** is used for other digital images. However, **Fine / Grain** should be used on any high resolution image (above four mega pixels) providing the noise is not too severe. If your image is highly compressed JPEG, low resolution or another very noisy image, put the **Suppression Type** selector on **Coarse / Noise**. If after using the **Fine / Grain**, Noise setting on a high resolution image and it still appears noisy or grainy, try again with the **Coarse / Noise** setting.

By being able to switch between the two settings it is like having two Plug-Ins in one. The user interface changes with the **Suppression Type** selection.

With the **Suppression Type** set to **Coarse / Noise** you can adjust the amount of noise removal in the Highlights and Shadows using the **Noise Controls**.

With the controls set to the default settings you will remove noise with little affect to image detail. As you move the sliders toward the maximum, you will start to remove image detail and you will start to blur the image. As you move the sliders toward the minimum, you will decrease the amount of noise removal. With both sliders at a setting of zero there is no change to the image.



KDOAK DIGITAL GEM Professional Plug-In Controls

With the **Suppression Type** selector the **Fine / Grain**, Noise setting you can adjust the amount of suppression and the detail sensitivity using the **Grain/Noise Controls**.

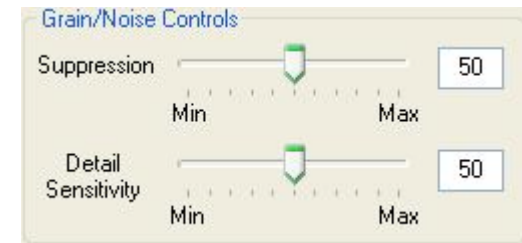
The Grain Controls allow you to fine tune the grain suppression of an image. The suppression slider allows you to control the amount of grain suppression that is performed on the image with higher values producing more reduction. The Detail Sensitivity slider allows the user to control what the algorithm identifies as image noise verses image detail.

As the Detail Sensitivity slider is increased, the grain suppression will become less aggressive, thus preserving more detail. When the Detail Sensitivity slider is moved to the left, or decreased, the grain suppression will be more aggressive and preserve less detail.

The edit box next to the slider shows the exact value of the slider setting. The sliders have positive values from 0 to 100. You can type a value directly in the edit box, and the slider will be updated after a short delay.

With either **Suppression Type** setting you can visually determine how much detail is lost by using the Plug-In. Using the radio buttons below the preview window select Noise.

The preview window will show what is being removed. At the default settings and below you should see only random "noise" as you get more aggressive, you will begin to see image detail.



KODAK DIGITAL GEM Professional Plug-In Clarity Controls

The **Clarity Controls** allow you to fine tune the overall sharpness or softness of an image.

Removing noise at the default settings and below should not remove detail and theoretically, the sharpness remains the same as the original. However, the image may appear less sharp. This is because your eye may identify the noise or grain as the sharpest part of the image. With these artifacts gone the image appears less sharp.

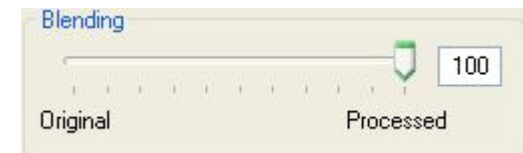
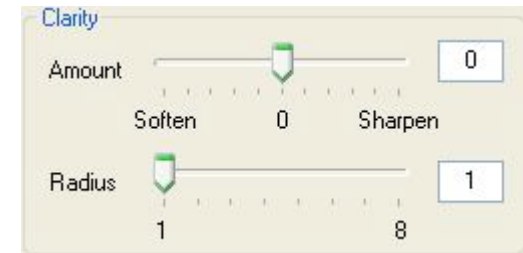
The **Clarity Controls** allow you to recover sharpness that appear lost. It also allows you to soften the image even further in cases where image detail detracts from the image.

The Amount slider lets the user soften (left) or sharpen (right) the effect on the image. The slider ranges from -50 to 50, with 0 being the neutral (no effect), default setting. The radius slider allows the user to control the amount of surrounding pixels that will be affected by the sharpen/soften filter. The slider ranges from 1 to 8, with 1 being the default setting. It is important to note that if the "Amount" slider is set to zero, the radius slider has no affect. Moving the radius slider to the right increases the amount of surrounding pixels affected for a more aggressive result on the image.

The **Blending Slider** can be the final adjustment you may choose to make.

It controls the strength of the DIGITAL GEM Professional Plug-In effect. Setting the blending slider to 100% is the strongest effect and setting it to 0% is no effect. At 50% blending, the final image is half of the processed image blended with half of the original image.

If you are using Windows, you can move a slider in single increment steps using the left and right arrow keys on your keyboard once you have selected it by clicking on it or using the tab key. You can also use the page up and page down keys to move the slider in larger increments, or the home and end keys to move the slider to the minimum and maximum values. This feature is not available using a Mac.



KODAK DIGITAL GEM Professional Plug-In Buttons

OK Button – This button will close the Plug-In window and process your image with the current settings of the controls. Once you have applied the Plug-In you can go to Edit > Fade to reduce the effect your image editor. This will give you the similar type of adjustment you get with the **Blending Slider** inside the Plug-In.

Default Button - This button sets the DIGITAL GEM Professional Plug-In slider controls back to the default values.

Cancel Button - This button will close the Plug-In window without making any changes to your image.

Help Button - This button will launch your default browser to display the help document.

Tutorial Button - This button will launch your default browser to display the Tutorial document.

